

# Get the most out of the Great Outdoors

Products to enhance your  
next Caravan adventure



**SMART SAT**  
OYSTER VISION SATELLITE TV

**AMI**  
Connect

**AMI**

**Specialist equipment and accessories  
for Caravans and Motorhomes**



# Contents

Oyster V Satellite TV Receiver System	4-7
Glomex Nashira Terrestrial Antenna	8
Banten Digi Whip Antenna	9
Cel Fi Go Smart Repeater - for vehicles	10
Cel Fi Go Pro - for buildings	11
Inmarsat iSatPhone 2	12
iSatPhone 2 Drive Dock	12
ACR Emergency Beacon	13
VDO Viewline Gauges	14
Fixtech Sealant and Bonding products	15
Cristec Battery Chargers	16-17
Macris Industries Utility and LED Lightbars	16-17
Marco Pump Range	18
Tecma Toilets	19
Raritan Toilets	19
Hertz Audio Systems	20

## Contact us

Western Australia Head Office	Ph: 08 9331 0000	Email: <a href="mailto:ami@amisales.com.au">ami@amisales.com.au</a>
Brisbane	Ph: 07 5540 6800	Email: <a href="mailto:qld@amisales.com.au">qld@amisales.com.au</a>
Gold Coast Showroom	Ph: 07 5540 6880	Email: <a href="mailto:qld@amisales.com.au">qld@amisales.com.au</a>
Cairns (Trading as Nautical Supplies)	Ph: 07 4050 0090	Email: <a href="mailto:cairnssales@nauticalsupplies.com.au">cairnssales@nauticalsupplies.com.au</a>
New South Wales	Ph: 02 9816 7100	Email: <a href="mailto:nsw@amisales.com.au">nsw@amisales.com.au</a>
South Australia	Ph: 08 8249 3200	Email: <a href="mailto:sa@amisales.com.au">sa@amisales.com.au</a>
Victoria	Ph: 03 5978 0143	Email: <a href="mailto:vic@amisales.com.au">vic@amisales.com.au</a>
Darwin (Trading as Nautical Supplies)	Ph: 08 8981 6651	Email: <a href="mailto:sales@nauticalsupplies.com.au">sales@nauticalsupplies.com.au</a>
Smartsat (Oyster Vision)	Ph: 08 9331 0050 Ph: 07 5540 0850	Email: <a href="mailto:info@smartsat.com.au">info@smartsat.com.au</a>

# A Giant leap forward

The Oyster® Vision V features several ground-breaking innovations taking mobile antenna technology to a new dimension.



HIGH QUALITY  
MADE IN GERMANY

*tenHaaft*®

**Oyster® V**

- Powerful system with a combination of GPS, 3D compass and inclination sensor
- App connectivity for advanced system control
- Fully automated satellite searching and aiming, usually in 1 turn.
- Very simple operation
- Two-cable loom solution
- 85cm antenna dish for optimal reception range.
- Innovative swivel-head technology
- Roof unit only weighs 11kg thanks to ultralight magnesium components.
- Aerodynamic design for low wind resistance.

**SMART SAT**  
OYSTER VISION SATELLITE TV

Imported and Distributed  
in Australia by Smartsat

## Don't search. Find!

The Oyster® V knows exactly where the satellites are positioned – at any time. Tedious full-range scans are no longer necessary. The system swiftly aims itself to the satellite.

This technological edge is the result of three interacting components: GPS, 3D compass and inclination sensor. The GPS unit identifies the position, the 3D compass identifies the direction which your vehicle (and the antenna, accordingly) is oriented to, and the inclination sensor exactly determines the vehicle's inclination, causing the antenna to make an adjustment.

The effect of the vehicle inclination is often underestimated. Even a few degrees may already affect reception significantly, much more than the vehicle's difference in elevation between a valley and a mountain top.



Update software easily via the new mobile app available free from the iOS and Android stores.

Protected via self-closing feature when the vehicle is moving.





## Over 20 years of happy Australian Caravan, RV and Motorhome customers

Oyster is a well known brand, preferred by some of Australia's leading caravan and motorhome manufacturers

Benefit from an Australia wide installer and dealer network for service and support

Contact your nearest Smartsat or AMI branch for sales or support enquiries



# Premium quality manufacture

Includes components of the highest quality that luxury car manufacturers like BMW, Range Rover, Mercedes and Tesla use in their automobiles.

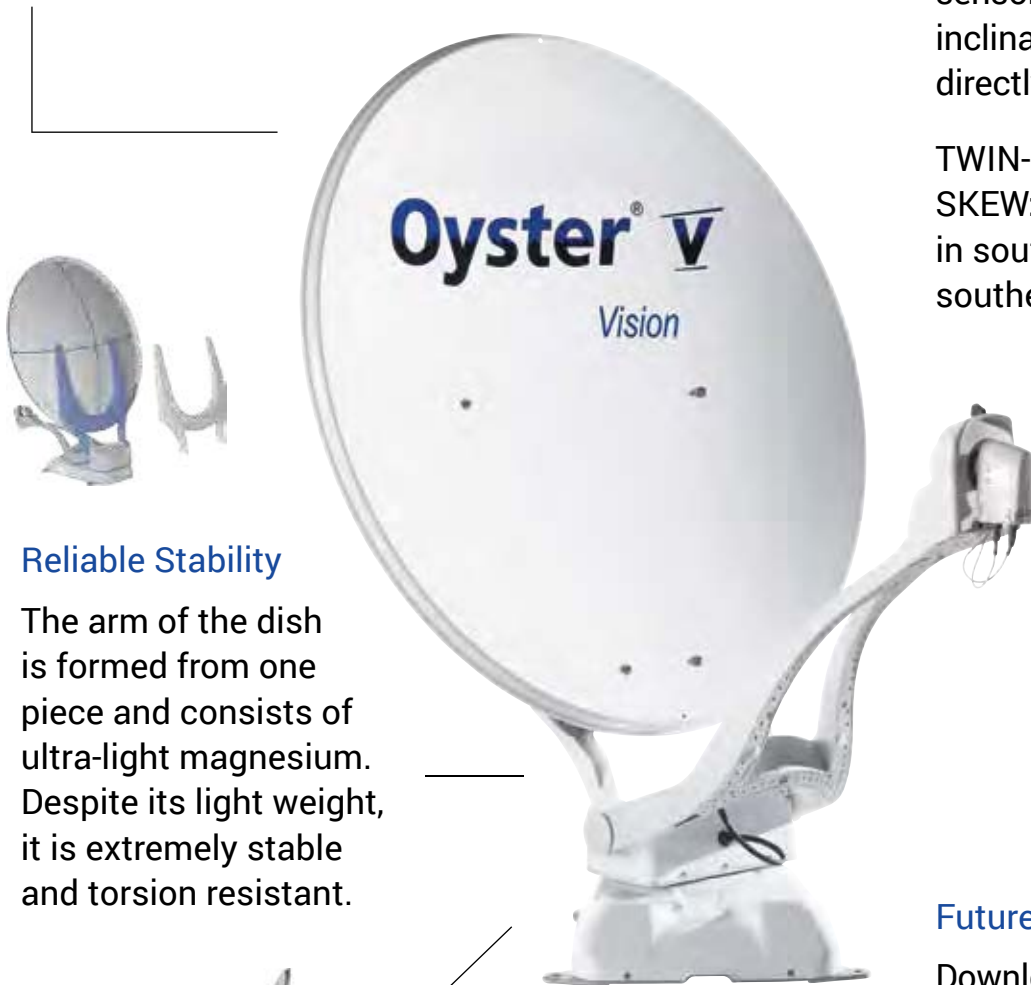
## Excellent Range

The Oyster® V's reception range is second to none. This is mostly attributed to the antenna dish's 85 cm diameter.

## Fast Acquisition

GPS identifies the location, a 30 compass identifies the vehicle direction and an inclination sensor compensates for any inclination. The antenna aims directly at the satellite location.

TWIN-LNB: for using two TV's  
SKEW: for optimal reception in southwestern and southeastern regions.



## Reliable Stability

The arm of the dish is formed from one piece and consists of ultra-light magnesium. Despite its light weight, it is extremely stable and torsion resistant.



## Future Proof

Download the free app that not only allows you to update your satellite system but also offers many other valuable features.

Via the app, your smartphone is connected to the controller of the Oyster® V.

Technical problems can usually be diagnosed quickly

Alternative: updates via USB stick.



## Rotary Head Technology

Just the head rotates while the rest of the antenna body remains fixed.

## One cable is enough

Ten haft only use a special coax cable that conducts all currents and signals required for control, power supply and signal transmission to the top unit.

# Glomex Nashira Terrestrial Antenna

## The Glomex Nashira AGC automatic gain TV control amplifier

With new Nashira, you have only to turn on the TV, stay comfortably seated on the sofa and enjoy your favourite programs; Nashira AGC will adjust by itself the gain of the TV signal to ensure the best possible reception of television broadcasts.



**FULL HD** **DVB-T** **DVB-T2**



Code: V9112AGC

## The new automatic gain TV Control Amplifier



Code: 50023/14



50023/14  
Automatic  
Gain Control  
Line Amplifier

Supplied



V9139/20  
20m / 66'  
Coax Cable

Supplied



V9143  
1.5m / 5'  
TV Set Cord

Supplied



V9144  
Female Gold  
Plated Connectors  
(2pcs)

Supplied



V9147  
2 Way Splitter

Option



V9172  
Stainless Steel Mount  
for V9112/12  
and V9150/12

Option



# Banten Digi Whip Antenna

High quality fit for purpose design for crystal clear reception

The Banten Digi Whip Antenna is a mere 25cm long, and is available with a snap on base connection adaptor. Receive clear TV reception for your caravan or motorhome. Includes 5m cable supplied in the kit.

Typology:	Antenna
Band:	TV DVB-T
Length mt:	0.25 m
Ferrule:	Plastic
Style:	Plastic whip
Colour:	white
Weight:	430gm
Mount:	1-1.4" female
Cable or connectors:	5.0 mt cable
Gain:	24dB

## BANTEN



SNAP ON CONNECTOR  
PREVENTS DAMAGE



# CEL-FI GO Smart Signal Repeater

## Your mobile solution to improve 3G/4G voice and data coverage

Introducing Australia's first carrier approved in-vehicle repeater. Cel-Fi GO is a 3G/4G mobile signal amplifier that provides up to 70 dB of signal gain - 30x more powerful than a standard antenna/cradle set-up. All the while unconditionally protecting the mobile network.

### The Benefits of using Cel-Fi

- Provides Coverage For Automotive Applications Increases Mobile Data Speeds
- Extends Mobile Phone Battery Life
- Eliminates Dropped or Missed Calls
- Improves Voice Quality
- Telstra configured models in stock, other carriers available upon request



### Mobile Pack:

- Cel-Fi GO Mobile Model
- Pulse Magentic Low Shadow Base Antenna with 3.5m cable
- Indoor Panel Antenna with 3m cable
- 12v Cigarette Lighter DC 5m Lead

### RV/Trucker Pack

- Cel-Fi GO Mobile Model
- Blackhawk Trucker Edge 105cm Antenna with 4m of RG58 cable
- Adhesive Indoor Antenna with 3m cable
- 12v Cigarette Lighter DC 5m Lead



# Cel-Fi GO PRO

Indoor Smart Signal Booster for  
3G, 4G and 4G LTE networks



## **Cel Fi Go Pro is a great option for Caravan parks and large areas**

Cel-Fi PRO improves 3G, 4G, and LTE cellular service by eliminating dead zones and dropped calls. With 100 dB of gain, Cel-Fi PRO will not only improve cellular service across four (4) concurrent bands, it will also reduce your cell phone's power requirements and extend its battery life. Cel-Fi PRO covers up to 13,000 ft<sup>2</sup> (1,200 m<sup>2</sup>) of indoor space per system.

### **Benefit to Consumers**

- Improved Voice Coverage
- Improved Data Throughput
- Improved Battery Life
- Ease of Installation

### **Benefit to Operators**

- Reduced Churn
- Higher Data Service Usage
- Decreased Operational Cost
- Network Safe
- Operator Specific
- Self Adjusting
- Multi Technology Support
- Multi Carrier Support

# Inmarsat iSatPhone2

## The rugged Satphone with incredible battery life

Designed to work with the most reliable satellite communications network in the world. Stay connected in the most extreme and remote locations.

### Features

- Dust, water & shock resistant - IP68, IK04
- Reliable in any condition.
- High performance
- 8+ hours of talk time, 160 hours on standby
- Airtime additional, e-vouchers conveniently available on the AMI Connect website.
- Rugged design
- Assistance button and GPS tracking
- Incoming call alerts even with antenna stowed



# IsatDock2 DRIVE

## The only Inmarsat Certified dock for the IsatPhone 2

A highly featured docking station for the Inmarsat satellite handset that can be used in various maritime and transport applications considerably extending the functionality of the handset.

### Features

- Slim line compact installation
- Handsfree
- Privacy Handset option (ISD955)
- Voice, SMS and Circuit Switched Data capable
- Tracking and SOS (Via the ISatPhone 2)
- USB data interface
- Accessory / Ignition sense / Horn Alert
- 10-32V DC power input
- AC Plug pack 110/240 input (optional)
- SMA Connectors – Inmarsat Antenna / GPS Antenna



Whether a vehicle breakdown or a medical emergency, it's good to know that no matter where you are, help isn't far away.



## Emergency Beacons from ACR



### Resqlink™ View

Palm size unit with GPS technology sends a distress call with your location anywhere in the world, land or sea, to local emergency responders via 406 MHz satellite system.

Be reassured by the status of your call displayed on screen, so you know that help is on the way.

### Features

- No Subscription Required
- GPS and Galileo GNSS
- Built-In Buoyancy
- Strobe and Infrared Strobe
- Global Coverage
- Small and lightweight
- 5-year battery life
- 28 hours Operational Life\*\*
- \*\*Based on test report from an accredited laboratory

# Viewline range from Veratron VDO

## Modular high quality gauges made in Switzerland

ViewLine offers a comprehensive modular, modern series of instruments for engine monitoring. More functions and greater flexibility in installation and design increase the scope for high manufacturing standards and guarantee the highest level of reliability and readability.



Change or configure  
with your phone app

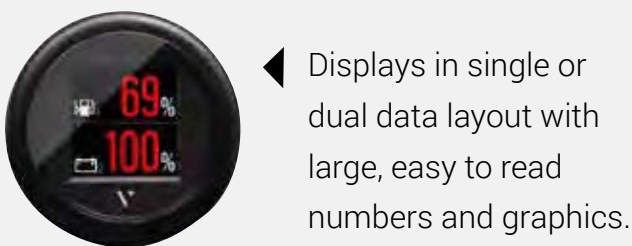
## New Release Viewline Flex 52mm

52mm gauge with embedded touch screen colour display can be configured to present a variety of data from different sources - resistive, frequency analogue senders as well as NMEA2000 input.

Instantly program via NFC to show the user's preferred sensor data via Veratron's free mobile app for iOS and Android.

**Display Fresh water levels, Waste water, Level Ammeter, Voltmeter, Battery SOC and more.**

- Powerless configuration
- Embedded passive NFC receiver
- No pairing required (for programming)
- No power required (for programming)
- Great benefit to dealers/shops as it can be programmed out of the box



◀ Displays in single or dual data layout with large, easy to read numbers and graphics.

## Viewline Convenience:

VDO's plug and play solution design concept offers a high level of installation flexibility for panel and flush mounting instruments. A cross-platform standard offers maximum freedom in respect of Instrument Panel customisation.



# Professional quality sealants from Fixtech



## FixSeal MSP15

Multi-purpose, interior & exterior.  
100% UV resistant, Avail. Black & White, Bonding & Sealing.  
All fittings & fixtures, cabinets, s. steel & rubber & PVC fixtures,  
antenna, satellite dish, hinges, hatches, rubber frame  
windows, outlets & sensors



## FixSeal + MSP190

100% UV resistant. Avail. Black & White.  
Structural bonding & sealing, direct glazing, body to  
chassis, window guides, head light mounts, structural  
s. steel components fittings & fixtures, long working time.  
structurally secure yet easy to create smooth finish.



## FixSeal MSP15



FMP100 to glue all the  
cabinets together

MSP Clear for  
finishing seals

## Extra Fine Filler MP101

Multi-purpose polyester putty.  
Avail. While extra fine. 2 pack, low water absorption.  
Ideal for smooth shaping and moulding. Quick to cure and  
easier to sand Ideal for timber work and fibreglass repair.



## Fixitmate FMP100

100% waterproof timber bonding.  
Avail. Transparent. Proven exceptional wood working  
adhesive stronger than F17KDH structural timbers. Easy to  
work with, less waste and good alternative to epoxy.



## FixSeal MSP Clear

Interior & exterior multi-purpose  
Avail. Clear. Internal adhesion of timber panels, wall panels, invisible  
joint sealing, non toxic, strong and no mould, fully paintable.



## BENEFITS OF FIXTECH PRODUCTS:

- MSP Adhesive sealants are:
- Non toxic and contain no solvents or isocyanate
  - Bondable to almost everything, s steel, timber fibreglass, gel coat, glass aluminium, PVC, rubber, granite, stone etc.
  - UV Resistant and colour stable.

# Silent Battery Chargers from Cristec

## Install YPower Chargers even in living areas

Robust, reliable and efficient, the YPOWER Range will offer you professional quality and simplicity thanks to its multi-output function.

- Fanless Silent Operation
- Charge up to 3 battery banks
- High Temperature Performance
- Easy Connection
- 5-Stage Charging Profile
- Adaptive Charging Cycle
- Worldwide Compatibility
- Plug & Play Connectors

Quick, reliable and friendly mounting AC & DC plug connectors included:



---

# Utility Lights from Macris Industries

## IS Series Bright low profile lighting

Available in 12 or 24 VDC, the Macris Industries IS Series Utility light is ideal for engine spaces, utility areas, and internal lighting. The range is designed to be impact and UV resistant, and ranges from 150-3200+ fixture lumens. Lens Material PMMA (acrylic). Average life expectancy 50,000+ hours

## ALpha LED Lightbar for focused light when you need it



ALPHA is unique in that it can be mounted in a variety of positions and features Macris proprietary Panoramic Spot Optics.

The ALPHA Elite LED Light is designed to be the go-to solution for a variety of lighting environments. Available as small as a 7" long (177.8mm) in its shortest configuration (shown left) and length customizable in 6.5" (165mm) increments up to 52.5" (1333.5mm).



Available in both 12V DC (up to 40 amps) and 24V DC (20 amps), YPower Chargers are ideal for Caravan and Motorhome installation. Most YPower models (excluding larger 60amp range) feature fanless operation, running silently so you can get a restful night's sleep.



**MACRIS**  
INDUSTRIES



# Marco Pump Range

## Pumps for every application

For pumps for a variety of applications on your Caravan or motorhome, trust quality equipment from Marco. The range includes pumps for Shower Kits and Toilets, transfer of Diesel or Oil, electronic pumps for washing application and more. Available in 12 or 24V, and constructed from hardwearing, corrosion resistant components.



Water Transfer  
Impeller



Electronic  
Pressure Pumps



Shower Kits



Wash Kit



Oil Transfer



Submersible  
Bilge



Diesel  
Transfer



Diesel Vane



**MARCO**  
FLUID TECH

# Tecma Macerating Toilets

Tecma toilets provide the quality and comfort of an at home style toilet, with simple installation and a wide variety of button and controller options.

## Benefits at a glance

Top design, quality components and production, and an uncompromising attitude and fast response to client needs have given Tecma its leading position.

### All Tecma macerator toilets have:

- A state of the art sanitation technology.
- Reliable operation.
- Extremely silent operation.
- Easy and fast installation.
- Water and power saving operation.

# TECMA



# Raritan Toilets

Raritan toilets feature low water consumption, are easy to operate, maintain, clean and provide years of service, even in the most extreme environments.

**The Atlantes Freedom** features low draw powerful Vortex Vac macerator technology. All components mounted within the bowl.

**The Marine Elegance** is the ultimate in electric toilets. Offering the comfort of a full size seat in a one piece china bowl with a unique mounting system. Offers a super small footprint at just 216mm x 248mm.

# RARITAN



Combine a Raritan toilet with the **new release macerator pump**, ideal for emptying holding tanks and featuring run dry protection.

For easy maintenance, the pump includes a gate valve as part of the intake connection, allowing the user to close the valve and safely remove the pump without leaving a mess in the work area.



# NERTZ marine

Designed in Europe

**SPEAKERS, AMPLIFIERS, SOURCE UNITS AND ACCESSORIES**



-   
WATER JET RESISTANT
-   
VIBRATION PROOF
-   
UV RESISTANT
-   
DUST INTRUSION RESISTANT
-   
HUMIDITY RESISTANT
-   
SALT FOG PROOF
-   
CORROSION RESISTANT
-   
THERMAL SHOCK RESISTANT
-   
STAINLESS HARDWARE

# Hertz Audio Systems

**HERTZ**  
**marine**

## HMR 20 Digital Media Receiver

HMR20 digital media receiver 3" colour TFT 10.5-16V black with bluetooth IP66. Supports DAB+ with external module



### Features:

- The large 3" full colour TFT IPS display remains visible even during daytime navigation and the big buttons make it easy operating while cruising.
- Customize the sound with 4 EQ preset created by Hertz audio engineer.
- Multicolour backlight for a perfect match with dashboard lighting.
- HMR 20 features 2 pairs of stereo outputs providing the ability to create 2 independently controlled listening areas.
- Voltage indicator to check-up battery status



HMC U1

## Optional HMC U1 Remote

*Play your favorite song and pump-up the volume while anywhere around your caravan.*

- IPX7 certification

## HEX 6.5 Coaxial

The compact 6.5" speaker, with a depth of only 2.36 in. delivers a detailed and dynamic sound, making every moment memorable.

### Features:

- Hertz Pure Marine Certified Product stamp featuring the IP65 protection grade, ASTM-D4329 standards for UV resistance.
- Edgeless mesh grille with magnetic locking system designed to disappear from view.
- Dedicated crossover designed to optimize sound emission for in-wall install.
- High efficiency tweeter designed with FEM simulation to maximize sound projection for in-wall and in-ceiling installation.
- Woofer with 25 mm (1") voice coil and 6  $\Omega$  impedance, optimized for any amplifiers system.
- Silicone insulated lead wires for extended durability.

HERTZ  
marine



HEX6.5MW

## HMX 6.5 Coaxial

The specific ASA plastic grilles and polypropylene cone with comolded Santoprene surround provide UV resistance according to the severe ASTM-D4329 standards. The Aramid fiber spider with silicone-insulated lead wire ensures durability and constant performance over time.

Parts and assembly methods are designed to operate in harsh environments, ensuring the best audio performance season after season.

### Features:

- Hertz Pure Marine Certified Product stamp featuring the IP65 protection grade, ASTM-D4329 standards for UV resistance.
- 1.4" Neodymium magnet tweeter featuring a PEI material dome combined with faceplate and acoustic lens optimized for best off-axis dispersion and highest SPL.



HMX6.5  
HMX6.5LD



HMX6.5C  
HMX6.5LDC

# HMP4D Four Channel Amplifier

The compact HMP amplifiers with a cast-aluminium IP64 chassis, are the ideal choice for adding multi-zone audio to your caravan. Class-D technology maximizes efficiency ensuring an incredible power to size ratio and low battery drain. The complete integrated crossover and the bridge operation mode improve versatility to satisfy every installation need.

## Features:

- Hertz Pure Marine Certified Product stamp featuring the IP64 protection grade, ASTM-D4329 standards for UV resistance and ASTM-B117.
- Compact design built from extruded aluminum heatsink with top side ensuring effective heat transfer.
- Power supply featuring multiple winding transformer, Low-ESR 105°C capacitors, 2 Ω stable output stage.
- Complete crossover filters providing a greater application versatility for the design of active systems.
- Bridge operation mode to drive a subwoofer or to create a powerful dual-mono system.



**HMP4D**  
Four Channel  
Amplifier

HERTZ  
**marine**

# Interested in quality gear for your boat?

Visit our websites for the latest products from the AMI Group

**[www.amisales.com.au](http://www.amisales.com.au)**

Steering and stabilisation, marine electronics, electrical, safety, chandlery and more

**[www.marsafe.com.au](http://www.marsafe.com.au)**

Safety products and servicing

**[www.tmq.com.au](http://www.tmq.com.au)**

Marine electronics designed and engineered in Brisbane Australia

**[www.amiconnect.com.au](http://www.amiconnect.com.au)**

Satellite phones, VSAT, Iridium and airtime

**[www.nauticalsupplies.com.au](http://www.nauticalsupplies.com.au)**

Darwin's longest running chandlery and service centre

**[www.navonboard.com.au](http://www.navonboard.com.au)**

Navonics Electronic marine charts

